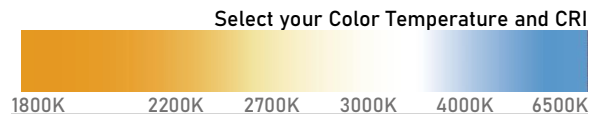
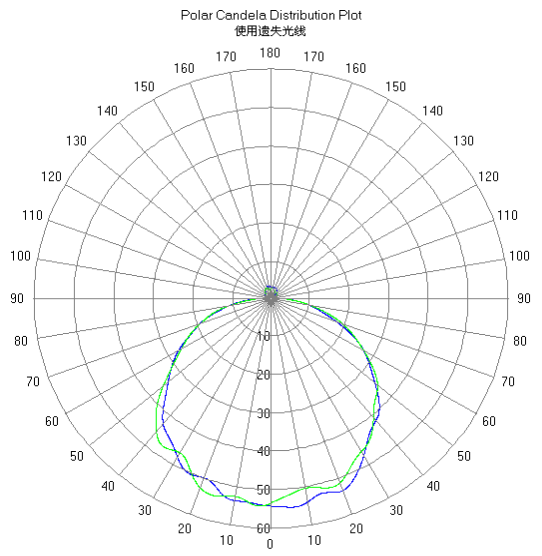
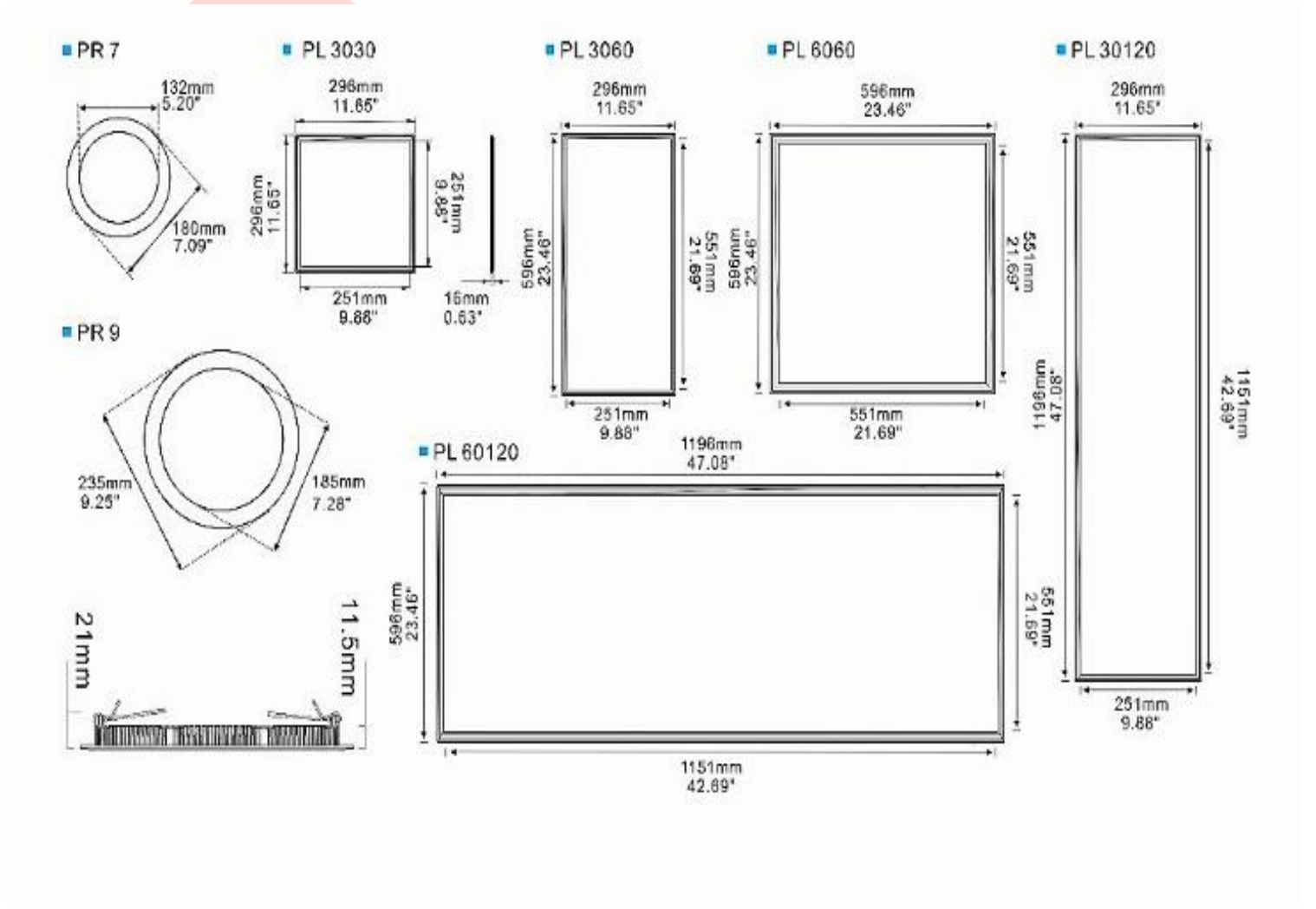


Product information  
LED Panel Light



product size:

© 2014 QUEENDOM GROUP TECHNOLOGY CO., LTD. ALL RIGHTS RESERVED. QUEENDOM GROUP TECHNOLOGY CO., LTD. IS A REGISTERED TRADEMARK OF QUEENDOM GROUP TECHNOLOGY CO., LTD. IN CHINA AND OTHER COUNTRIES.



Model Description

Description	Order Code	SIZE Code	size: (mm)	Voltage	Power/w	Initial Lumens/LM	Color	Electrical parameters
ZF-CGK-18W	ZFMBD5901	PL3030	300*300*30	AC180-265V	18W±5%	≧ 1800	3000K/6500K	50/60Hz CIR80 PF>0.95
ZF-CGK-24W	ZFMBD5902	PL3060	300*600*30	AC180-265V	24W±5%	≧ 2400	3000K/6500K	50/60Hz CIR80 PF>0.95
ZF-CGK-36W	ZFMBD5903	PL6060	600*600*30	AC180-265V	36W±5%	≧ 3600	3000K/6500K	50/60Hz CIR80 PF>0.95
ZF-CGK-36W	ZFMBD5904	PL30120	300*1200*30	AC180-265V	36W±5%	≧ 3600	3000K/6500K	50/60Hz CIR80 PF>0.95
ZF-CGK-72W	ZFMBD5905	PL60120	600*1200*30	AC180-265V	72W±5%	≧ 7200	3000K/6500K	50/60Hz CIR80 PF>0.95
ZF-TG-36W	ZFMBD5906	PL6060	600*600*30	AC180-265V	36W±5%	≧ 3600	3000K/6500K	50/60Hz CIR80 PF>0.95
ZF-TG-36W	ZFMBD5907	PL30120	300*1200*30	AC180-265V	36W±5%	≧ 3600	3000K/6500K	50/60Hz CIR80 PF>0.95
ZF-OG-72W	ZFMBD5908	PL60120	600*1200*30	AC180-265V	72W±5%	≧ 7200	3000K/6500K	50/60Hz CIR80 PF>0.95

Product Introduction

Approved: UL/DLC Premium Certified  
 Material: ALU ,Diffuser Plate, LGP, Reflective Paper and Rear panel  
 Size: 1 × 4, 2 × 2 and 2 × 4  
 Wattage: 18-72w  
 CCT : 3000K/4000K/5000K/6000K  
 Lumens : 100lmw and 150lmw  
 CRI : >83  
 THD: <20%  
 Beam Angle: 120°  
 Voltage: 100-277V, 50/60Hz  
 Power Factor: ≧ 0.9  
 LEDs: SMD2835  
 Ambient: -0 °F to 122 °F  
 Lifetime: >50,000 hrs  
 Functions  
 0-10V Dimming  
 Emergency Battery( Separated or Integration )  
 Wattage DIP Adjustable  
 CCT Wattage Adjustable

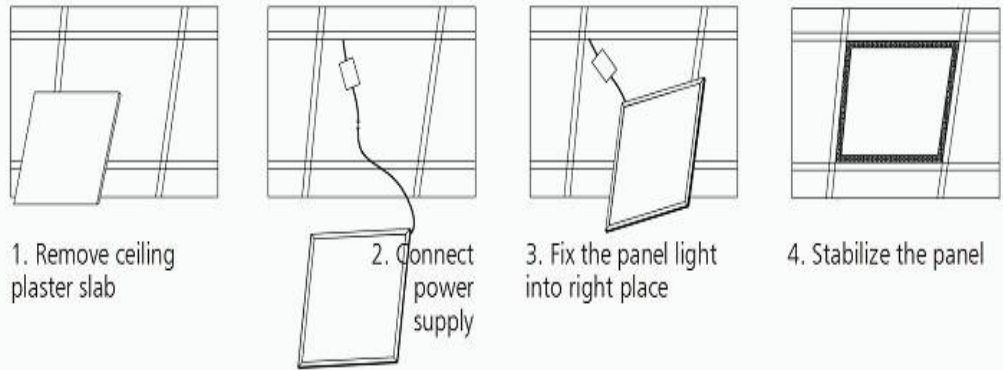
Application Scenario Case




LED Backlit Panel Lights  
**180LM/W**  
 2\*2ft / 2\*4ft / 1\*4ft are available  
 ETL Intertek LM-79 LM-80 RoHS

**Installation Notes:**

**1. Recessed into ceiling**



1. Remove ceiling plaster slab

2. Connect power supply

3. Fix the panel light into right place

4. Stabilize the panel

**2. Suspending**

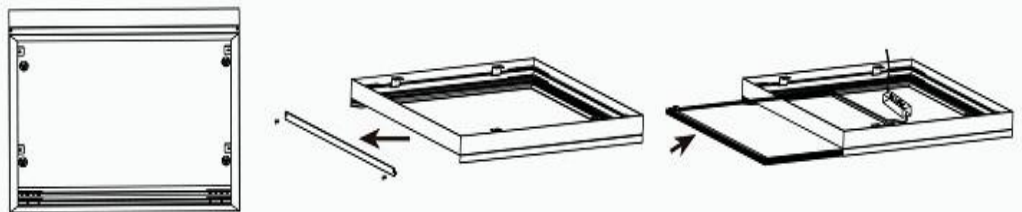


1. A. Fix the anchor into target place on the ceiling  
B. Fix the installation mount on the ceiling with plastic anchor

2. Hang the panel to ceiling with suspended installation kits

3. Adjust the length of steel wire. Connect the power supply

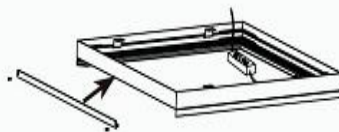
**3. Surface mounted**



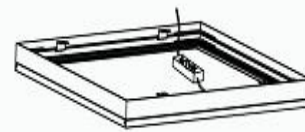
1. Fix the frame on the ceiling with screw

2. Pull down the side frame

3. Push the panel into the frame, connect the driver



4. Install the side frame



5. Turn on the power switch, finish the installation

Queendom logo are trademarks of china Technologies in the china States and other countries.

Data subject to change. Copyright © 2005-2012 Queendom Technologies. Queendom logo are trademarks of china Technologies in the china States and other countries. All rights reserved.

Queendom Technology. If you find that the content of the entry is suspected of infringement, please contact us via E-mail: gm@chian66.net, and we will deal with it in a timely manner in accordance with relevant laws and regulations. Without permission, commercial websites, etc. are prohibited from copying and grabbing the contents of Toutiao Encyclopedia; reasonable users, copyright cooperation E-mail: gm@chian66.net, please indicate the source from www.chian66.net. Feedback 2020 chian66.net

Guangdong Queendom Technology Co., Ltd.



**QUEENDOM**

TEL:+86-0769-81305858 **hotline:4001034104** WeChat: SUNBOY1913 LINE ID :2020131419

**E-mail:gm@china66.net** [www.china66.net](http://www.china66.net) Xinji Industrial Second Road, Dafen Community, Wanjiang Street, Dongguan City, Guangdong Province.China.



正发科技  
QUEENDOM TECHNOLOGY